

Instructions for Installing the HQ Pro-Stitcher Update

Updating from Versions 12.07.0007, 12.08.0010 or Beta Versions (00.00.00xx)

10/08/2012

ATTENTION: Before beginning the update process, please confirm that this update is compatible with your HQ Pro-Stitcher computer. You must have either an ASUS Eee PC Netbook computer (*identified by the “Eee PC” logo as shown in Figure 1*) or an Acer Iconia Tab computer (*identified by the Acer logo as shown in Figure 2*).

For all other HQ Pro-Stitcher computers/monitors (*including the IEI, Lilliput and Innovatek brands*), **DO NOT** install this update without purchasing an HQ Pro-Stitcher computer upgrade. Installing this update on one of those systems could cause the Pro-Stitcher computer to stop functioning.

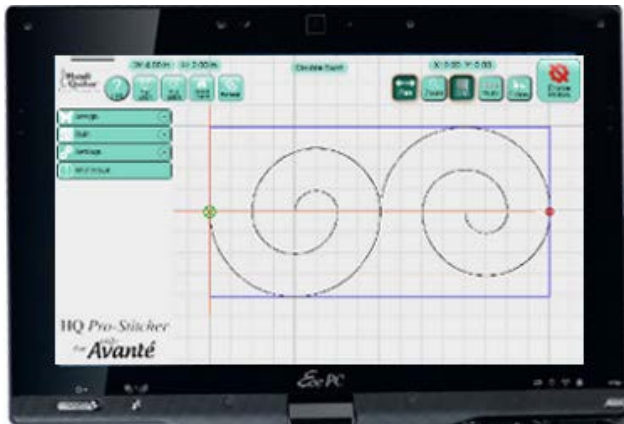


Figure 1

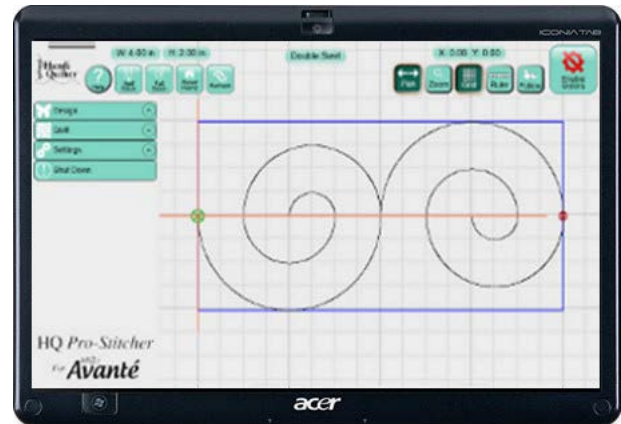


Figure 2

Step 1 - Download the HQ Pro-Stitcher Update File and the Art & Stitch Installation File

- 1.1 Click the download links one at a time to begin downloading each of the installation files. If you have previously downloaded and installed the *Art & Stitch* update from the Handi Quilter website, it is not necessary to download the *Art & Stitch* update again until a newer version is available.
- 1.2 Save the files (*PSUpdate.12_10_0020_H.exe and ArtStitchSetup2526.exe or newer*) to a USB flash drive. Do not select the option to Run the file or you will be installing on your desktop computer.

HINT: Instead of left-clicking on the link, right-click and select either **Save Target As** (*for Internet Explorer users*) or “Save Link As” (*for Google Chrome users*). Then save the file directly to the USB flash drive instead of the default **Downloads** folder.

- 1.3 Confirm that you have version 12.07.0007, version 12.08.0010, or a beta version (i.e. 00.00.00xx). The version information can be found by going to Settings, Advanced, About. If you have a different version, please refer to the instructions for that version.

Step 2 - Open the Windows Explorer File Browser and Install

2.1 Close the HQ Pro-Stitcher software by choosing Shutdown, **Exit to Windows**.

2.2 The next steps require a keyboard. Choose one of these three options:

- Open the pop-up keyboard on the screen by pressing the keyboard icon at the top of the screen.
- Remove the computer from the mounting bracket to access the keyboard.
- Plug in an external keyboard.

2.3 Press the **Windows** key. If you are not using the pop-up keyboard, you will need to hold the "Windows" key while performing the next step.

2.4 Press the **E** key. This should open an Explorer file browser window.

2.5 If you used the pop-up keyboard, close the keyboard using the **X** at the top right of the keyboard to close the keyboard.

2.6 If you previously installed a Beta version of Pro-Stitcher, you will need to uninstall the Beta version prior to installing the release version. Please refer to Appendix A for uninstall instructions. Then continue with Step 2.

2.7 In the Explorer file browser window, double-tap the drive letter representing your USB flash drive (*likely the E:\ Drive*).

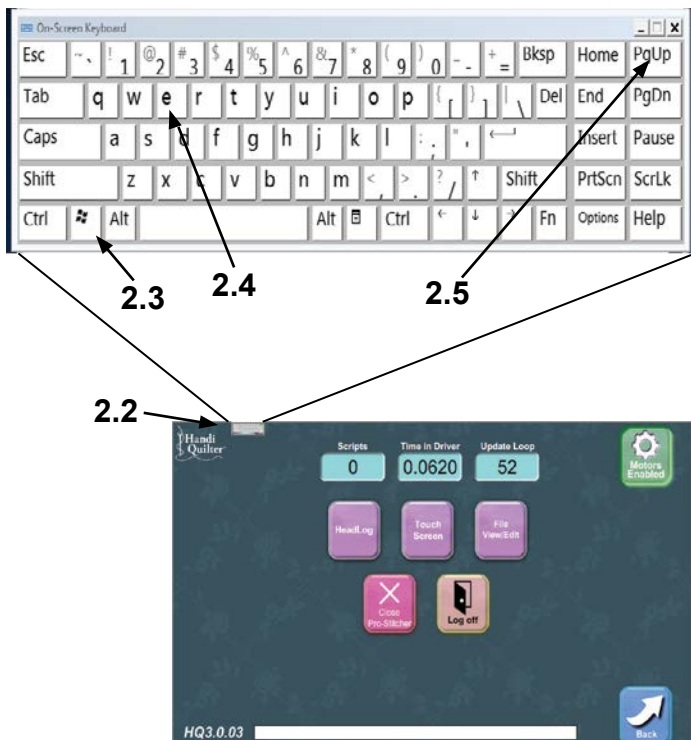
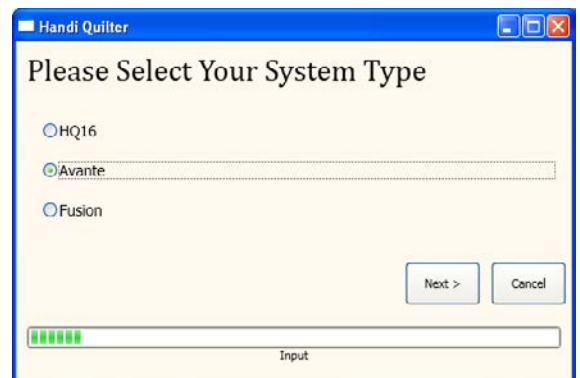
2.8 Find the Pro-Stitcher installation file (*i.e. PSUpdate.12_10_0020.exe*) (*change drive letter and/or folder if necessary*) and double-tap to start the HQ Pro-Stitcher installation.

2.9 Follow the instructions on-screen for installing the HQ Pro-Stitcher software.

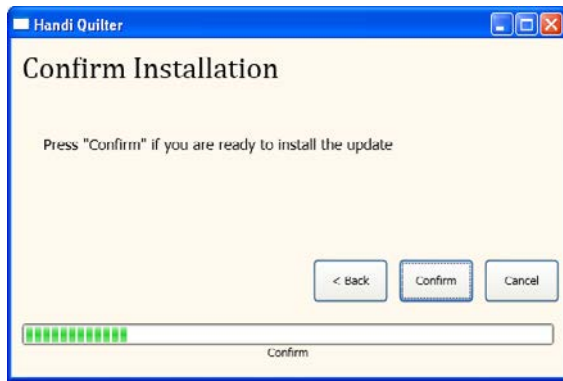
Screen 1: Press Start



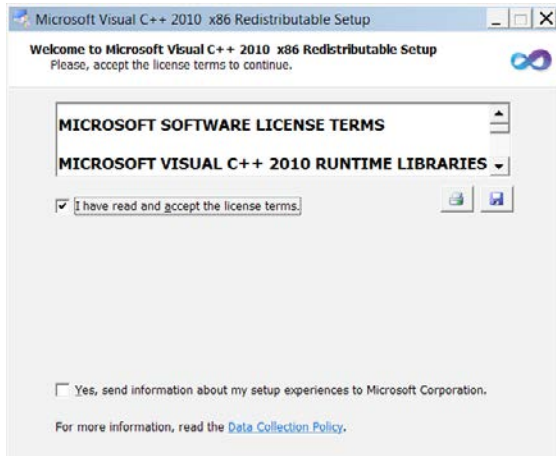
Screen 2: Select your system type and press Next



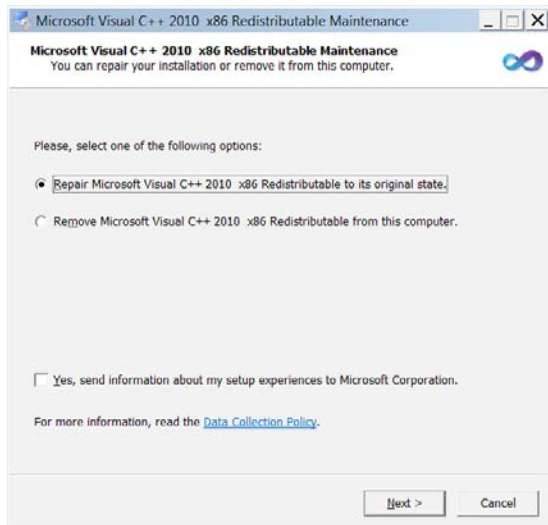
Screen 3: Press Confirm



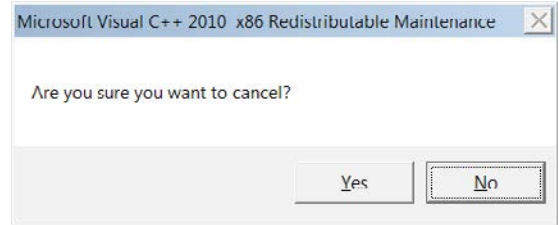
Screen 4: A new window will pop up. Read and accept the license terms by marking the check box and then press **Install**. Do NOT mark the bottom box to send information to Microsoft.



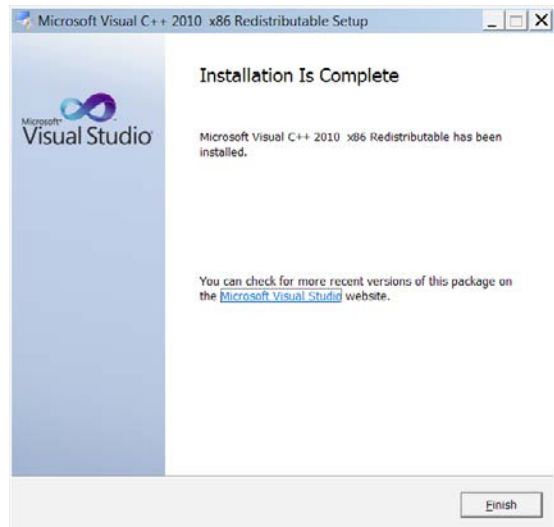
If the Visual C++ 2010 files are already installed, you will get a prompt to Repair or Uninstall. If this window appears, just select **Cancel**.



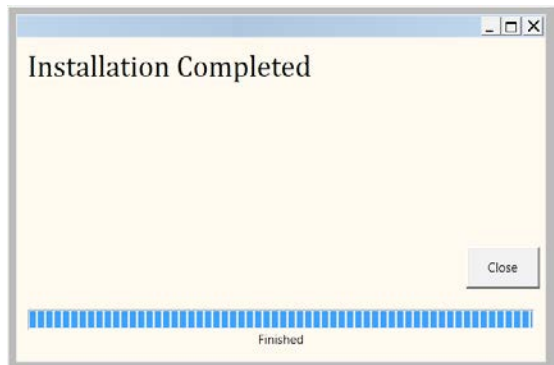
You will get another prompt asking if you are sure you want to cancel. Select **Yes**.



Screen 5: When Visual C++ is complete, select **Finish**.



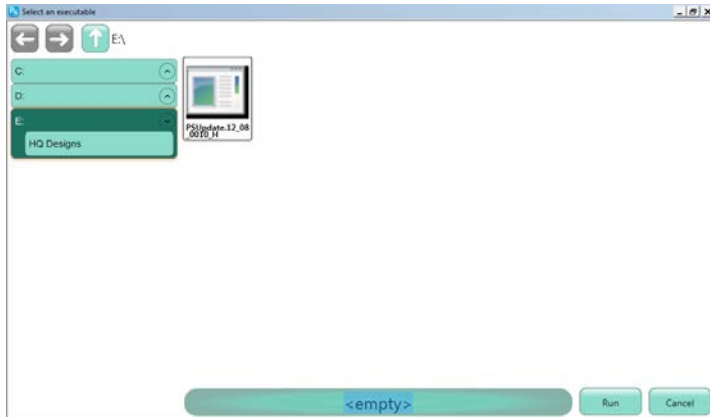
Screen 6: Press **Close** when finished.



2.10 Re-boot the HQ Pro-Stitcher computer from the Windows Start menu.

Step 3 - Installing Art & Stitch

3.1 If you have already installed the latest version of *Art & Stitch* (version 2526 or newer), there is no need to re-install *Art & Stitch*. Otherwise, from the Windows desktop, follow the instructions in step 3 to open the keyboard and open a file browser window.



3.2 Locate the ArtStitchSetup2526.exe file or newer and double-tap it to begin installation.

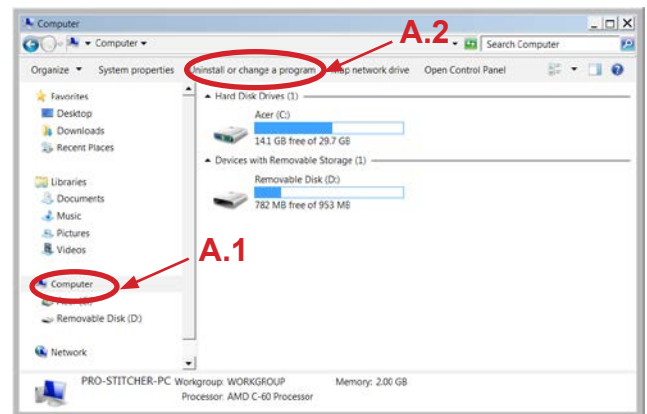
3.3 Follow the instructions to install the latest *Art & Stitch* software.

3.4 Re-boot the HQ Pro-Stitcher computer from the Windows Start menu.

Appendix A - Uninstalling the Beta Software (only required if a Beta version has been installed)

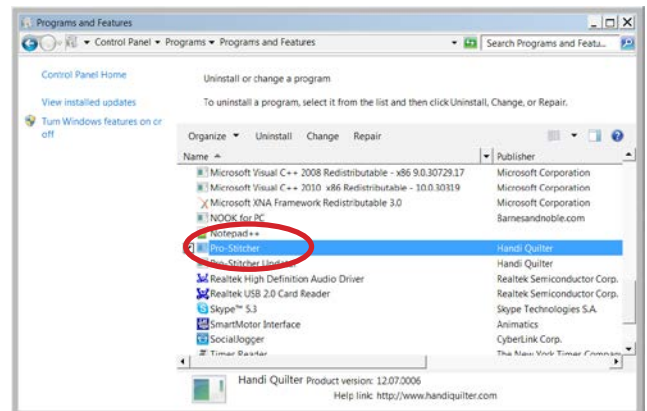
A.1 From the Windows Explorer window (refer to Step 3), make sure **Computer** is selected on the left.

A.2 Select **Uninstall or change a program** at the top of the window.



A.3 Double-tap **Pro-Stitcher** and follow the instructions to uninstall the Pro-Stitcher program. Do NOT uninstall any other Pro-Stitcher programs. Only uninstall the ONE program that says **Pro-Stitcher**.

A.4 Continue with Step 3 to install the new software.



Designed by a Quilter, for Quilters.®

For further questions, please contact us at: sales@handiquilter.com 877-697-8458 or 801-292-7988
445 N 700 W North Salt Lake, Utah 84054

Visit <http://www.HandiQuilter.com>

Instructions - Installing HQ Pro-Stitcher Update 4