

Instructions for Installing the HQ Pro-Stitcher Update

Updating from Versions 12.08.0012 or newer

10/08/2012

ATTENTION: Before beginning the update process, please confirm that this update is compatible with your HQ Pro-Stitcher computer. You must have either an ASUS Eee PC Netbook computer (*identified by the “Eee PC” logo as shown in Figure 1*) or an Acer Iconia Tab computer (*identified by the Acer logo as shown in Figure 2*).

For all other HQ Pro-Stitcher computers/monitors (*including the IEL, Lilliput and Innovatek brands*), **DO NOT** install this update without purchasing an HQ Pro-Stitcher computer upgrade. Installing this update on one of those systems could cause the Pro-Stitcher computer to stop functioning.

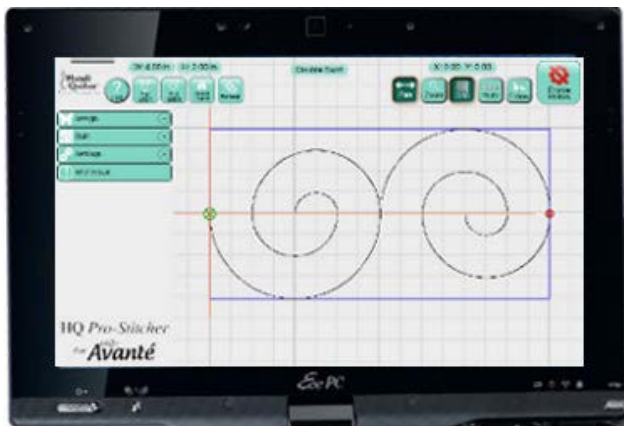


Figure 1

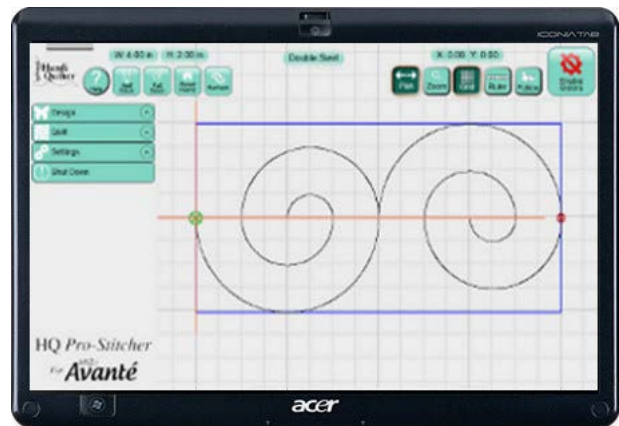


Figure 2

Step 1 - Download the HQ Pro-Stitcher Update File and the Art & Stitch Installation File

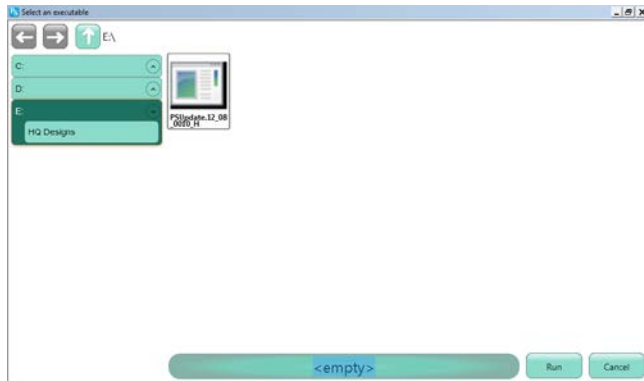
- 1.1 Click the download links one at a time to begin downloading each of the installation files. If you have previously downloaded and installed the *Art & Stitch* update from the Handi Quilter website, it is not necessary to download the *Art & Stitch* update again until a newer version is available.
- 1.2 Save the files (*PSUpdate.12_10_0020_H.exe and ArtStitchSetup2526.exe or newer*) to a USB flash drive. Do not select the option to Run the file or you will be installing on your desktop computer.

HINT: Instead of left-clicking on the link, right-click and select either **Save Target As** (*for Internet Explorer users*) or **Save Link As** (*for Google Chrome users*). Then save the file directly to the USB flash drive instead of the default **Downloads** folder.

- 1.3 Confirm that you have version 12.08.0012 or later. The version information can be found by going to Settings, Advanced, About. If you have a different version, please refer to the instructions for that version.

Step 2 - Installing Art & Stitch

2.1 If you have already installed the latest version of *Art & Stitch* (version 2526 or newer), there is no need to re-install *Art & Stitch*. Otherwise, from the Windows desktop, follow the instructions in step 3 to open the keyboard and open a file browser window.



2.2 Locate the ArtStitchSetup2526.exe file or newer and double-tap it to begin installation.

2.3 Follow the instructions to install the latest *Art & Stitch* software.

2.4 Re-boot the HQ Pro-Stitcher computer from the Windows Start menu.

Step 3 - Update Instructions for version 12.08.0012 or newer

3.1 If version 12.08.0012 or newer has already been installed, it is possible to update to the latest version using the **Update** function within the Pro-Stitcher software. Choose Design, File and then select **Update**.

3.2 Browse to find the update file on your USB flash drive. Either double-tap the file or single tap and press **Run**.

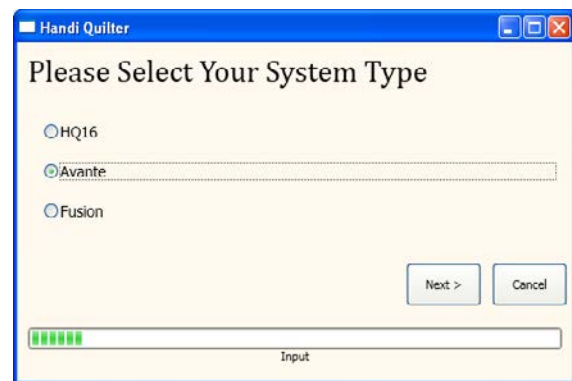
3.3 Find the Pro-Stitcher installation file (*i.e.* *PSUpdate.12_10_0020.exe*) (*change drive letter and/or folder if necessary*) and double-tap to start the HQ Pro-Stitcher installation.

3.4 Follow the instructions on-screen for installing the HQ Pro-Stitcher software.

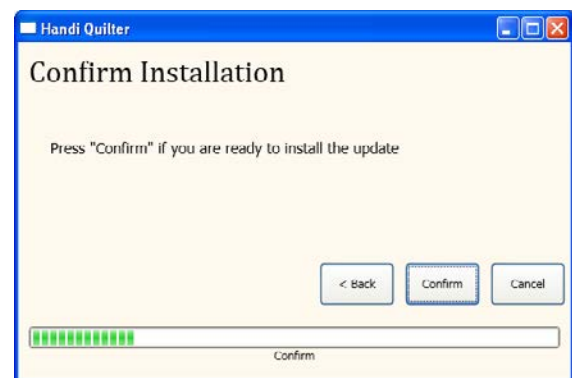
Screen 1: Press **Start**



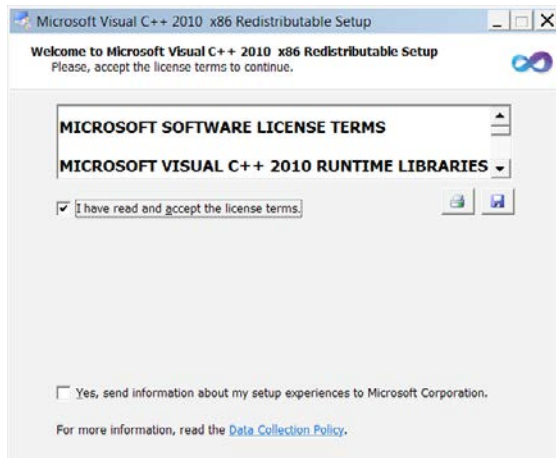
Screen 2: Select your system type and press **Next**



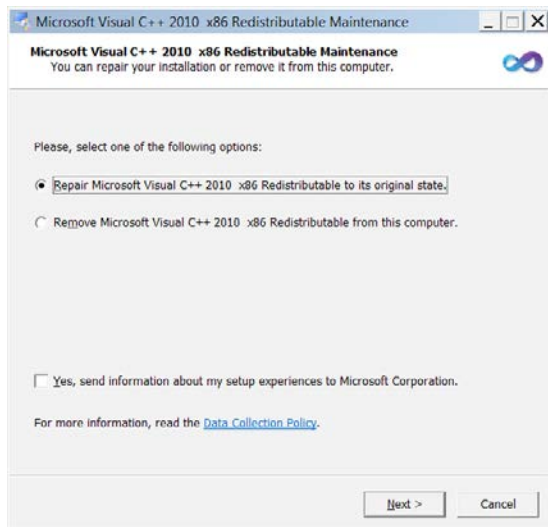
Screen 3: Press **Confirm**



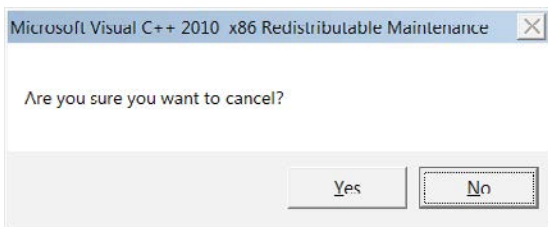
Screen 4: A new window will pop up. Read and accept the license terms by marking the check box and then press **Install**. Do NOT mark the bottom box to send information to Microsoft.



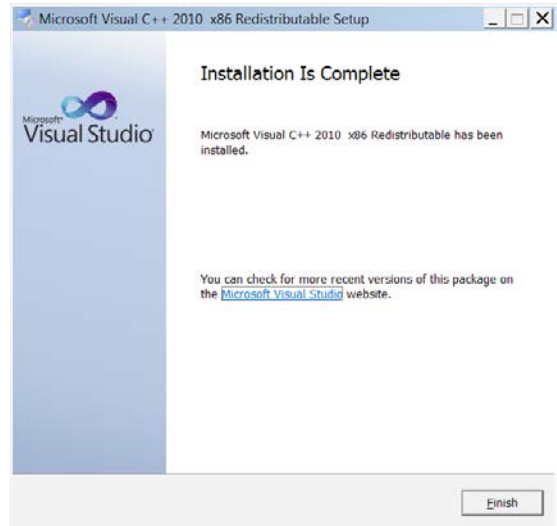
If the Visual C++ 2010 files are already installed, you will get a prompt to Repair or Uninstall. If this window appears, just select **Cancel**.



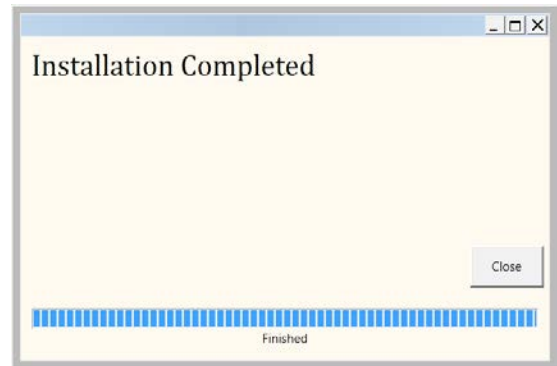
You will get another prompt asking if you are sure you want to cancel. Select **Yes**.



Screen 5: When Visual C++ is complete, select **Finish**.



Screen 6: Press **Close** when finished.



3.5 Re-boot the HQ Pro-Stitcher computer from the Windows Start menu.

NOTE: Alternatively, if the update file is saved to the root directory of the USB flash drive rather than in a folder on the USB drive, simply insert the USB flash drive into an available USB port on the HQ Pro-Stitcher and turn on the computer (*or re-boot if it is already on*). When the Pro-Stitcher computer boots up, it will recognize that there is a new update version and prompt to install the update.



For further questions, please contact us at:
 sales@handiquilter.com 877-697-8458 or 801-292-7988
 445 N 700 W North Salt Lake, Utah 84054